

PARADISE RECREATION PLAZA

MASTERPLAN PACKAGE

SECTION 1: OVERALL RECREATION PLAZA CONCEPT DESIGN
SECTION 2: SKATE PARK CONCEPT DESIGN
SECTION 3: BMX PARK CONCEPT DESIGN

DECEMBER 2020

PREPARED BY:

**OUTER
SPACE**

CONVIC



FOR:



SECTION 1: OVERALL RECREATION PLAZA CONCEPT DESIGN

DESIGN INTENT:

LOCAL PROXIMITY TO RIVER TORRENS,
LINK TO LINEAR PARK BIKEWAY

NATURAL OUTLOOK AND CHARACTER

CATER FOR A DIVERSITY OF AGE GROUPS

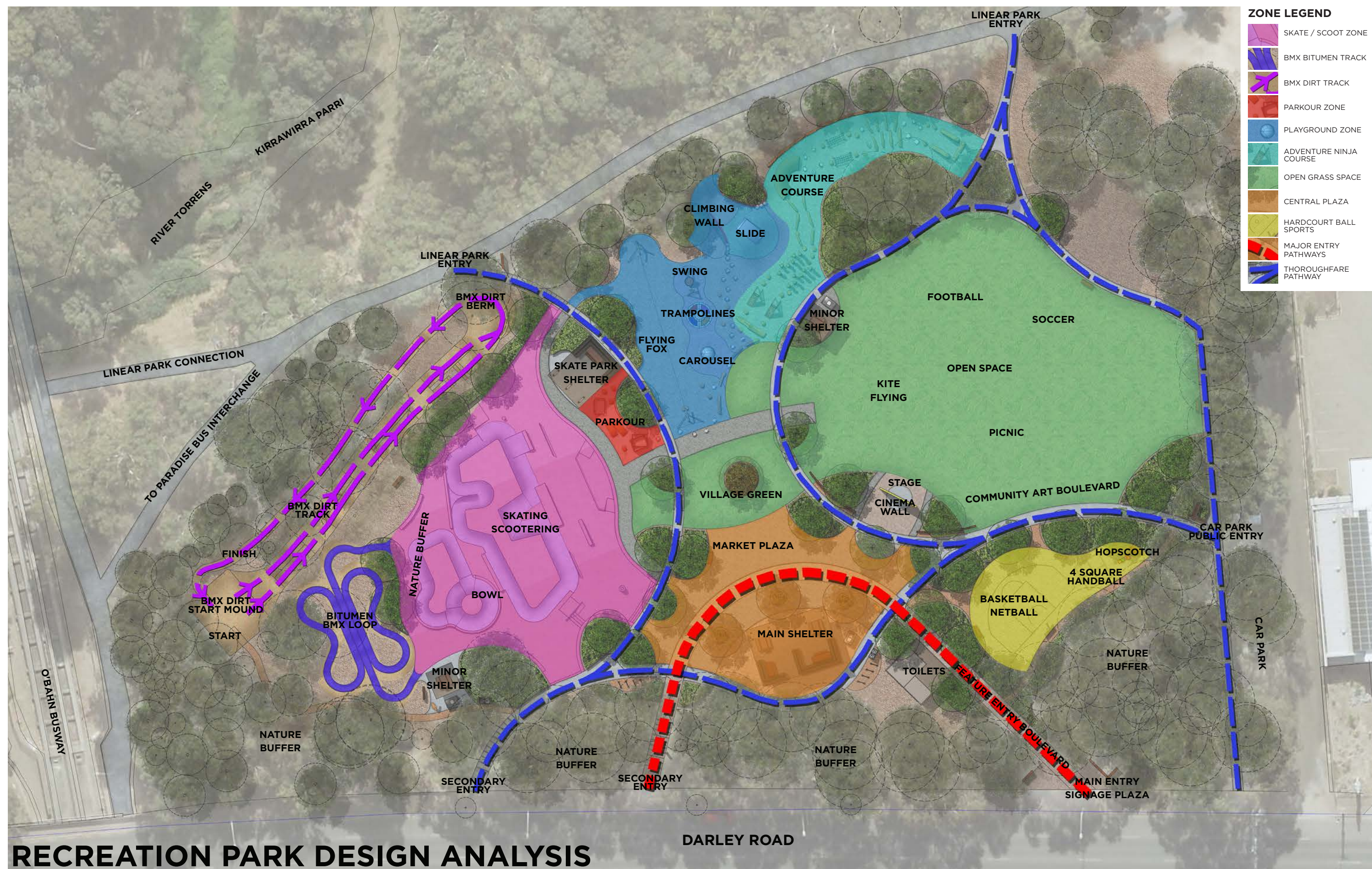
CATER FOR A LARGE RANGE OF ACTIVITIES

MAKE THE PLACE A DESTINATION

CREATE A NATURAL THEME TO PROVIDE A
RELATIONSHIP TO RIVER ENVIRONMENT



OVERALL RECREATION PLAZA CONCEPT DESIGN



SERVICES LEGEND

- SH SHELTERS
- PT PICNIC TABLES
- BS SEATING / BENCHES
- BBQ BBQ'S
- BIN RUBBISH BINS
- DF DRINKING FOUNTAINS
- BR BIKE RACKS
- SI SAFETY SIGNAGE

LIGHTING LEGEND

- FLOODLIGHTS
- SHELTER LED LIGHTING
- BOLLARD LIGHTS



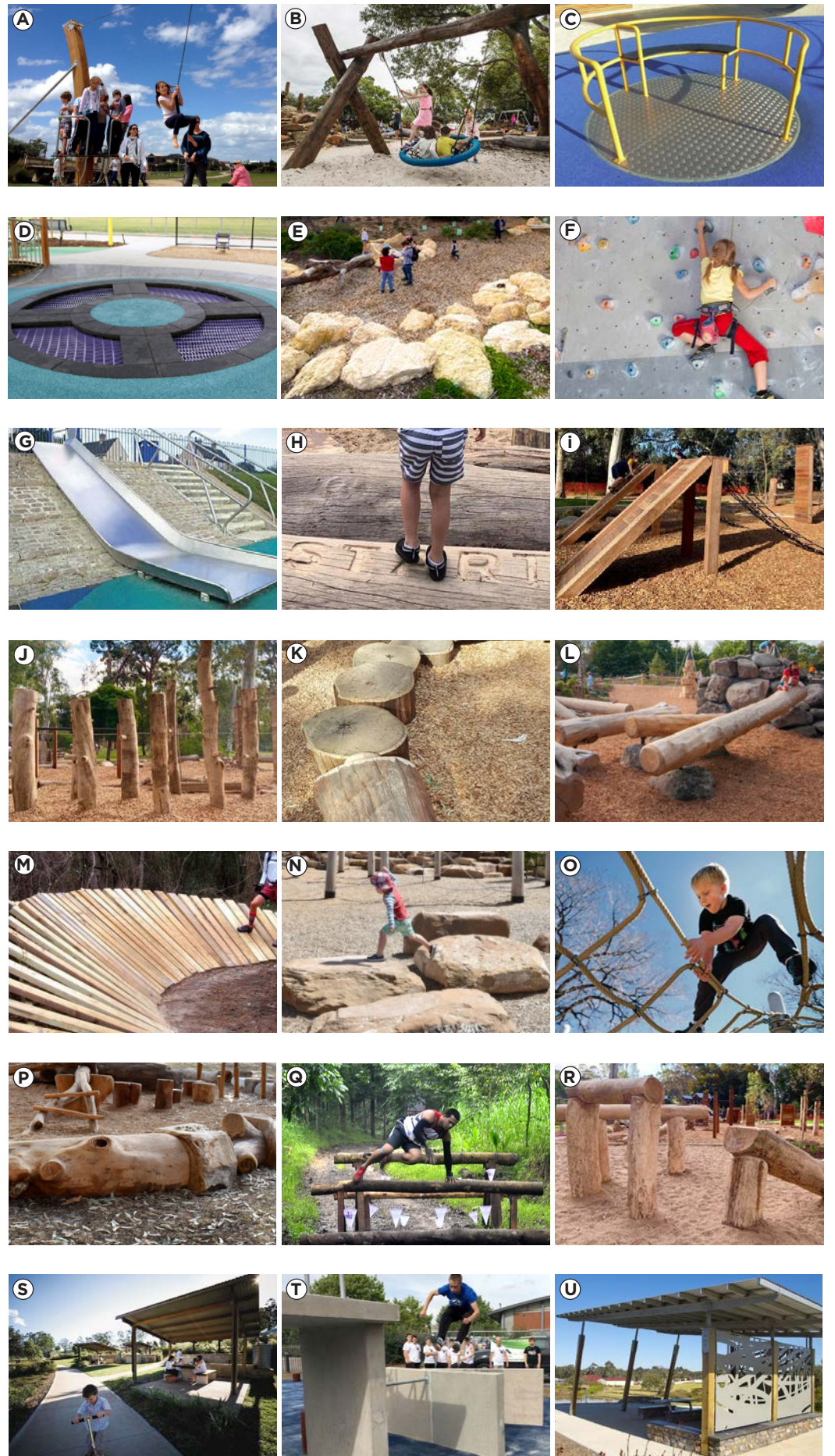


- PLAYGROUND**
- (A) FLYING FOX
 - (B) BASKET SWING
 - (C) SPINNING CAROUSEL
 - (D) TRAMPOLINE
 - (E) ROCK RUN
 - (F) 3M CLIMBING WALL
 - (G) 2M WIDE SLIDE MOUND

- NINJA ADVENTURE COURSE**
- (H) STARTING / FINISH LOG JUMP
 - (I) A-FRAME CLIMB AND ROPE NET
 - (J) PEGGED TOTUM POLE
 - (K) LOG JUMPS
 - (L) LOG BALANCE PLANKS
 - (M) TIMBER BERM RUN

- ADDITIONAL SPACES**
- (N) FLAT ROCK JUMP
 - (O) HORIZONTAL NET CRAWL
 - (P) LOG & ROCK JUMPS
 - (Q) LOG HURDLES
 - (R) BALANCE LOG U-TURN

- ADDITIONAL SPACES**
- (S) PLAYSPACE SHELTER / BBQ & SEATING
 - (T) PARKOUR ZONE
 - (U) SKATE PARK SHELTER
 - (V) SKATE PARK





CENTRAL PLAZA & OPEN SPACE

- | | | |
|--------------------------|--|--|
| A VILLAGE GREEN | H DOUBLE TOILET BLOCK WITH HOIST AND CHANGING TABLE | N PERFORMANCE STAGE |
| B FOOD TRUCK ZONE | I 4 SQUARE HANDBALL COURT | O COMMUNITY URBAN ART |
| C CENTRAL PLAZA | J BASKETBALL / NETBALL | P KICKABOUT & OPEN LAWNS |
| D MAIN SHELTER | K HOPSCOTCH | Q MAIN ENTRY & FEATURE SIGNAGE FROM DARLEY ROAD |
| E DOUBLE BBQ | L ALL ACCESS DRINK FOUNTAIN | R FEATURE ENTRY SCULPTURE |
| F BIKE RACKS | M CINEMA SCREENING WALL | S WAYFINDING SIGNAGE |
| G RUBBISH BINS | | |



SECTION 2: SKATE PARK CONCEPT DESIGN

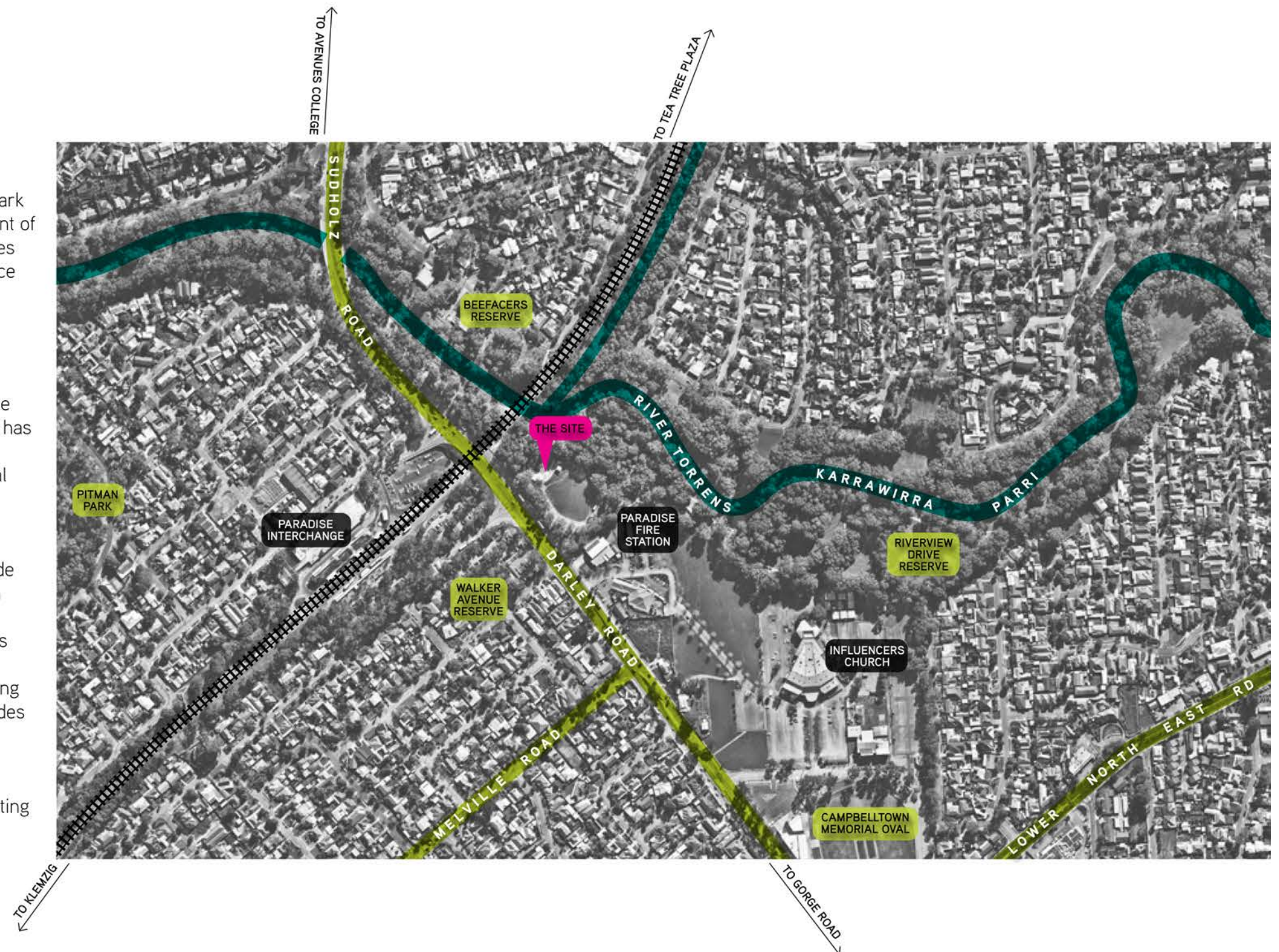
UNDERSTANDING SITE CONTEXT

Campbelltown City Council are proposing a new district scale skate park to replace the existing Paradise Skate Park facility. The redevelopment of the skate park and broader parkland will enhance the user experiences and create an alternative active recreation within the public open space forming a key destination for the youth of the local Paradise area and broader Campbelltown region.

The proposed location sits in place of the current skate park and is located in the north west corner of the parkland. The site sits on the southern side of the River Torrens/ Karrawirra Parri. The parkland has strong pedestrian connections through the river corridor and forms a part of a network of public open spaces within the city's ecological ribbon.

The development of the existing skate park and broader parkland provides an opportunity for the Campbelltown City Council to upgrade aging active recreation infrastructure and under utilised public open space and provide a contemporary skate park that meets current industry trends. The public youth space is easily accessible to locals through public transport with the North East Busway flanking the northern edge of the site and the Paradise Interchange within walking distance. The space will be available to all demographics and provides opportunity to lift the public profile of the youth within the City.

With the existing site features, the facility will create a dynamic and activated youth space with connections to the natural landscape setting offering recreational and social experiences for all members of the community.



THE PARADISE SKATE PARK PROJECT WILL BE A UNIQUE, FAMILY FRIENDLY DESTINATION THAT PROVIDES A MULTI-DISCIPLINE STREET AND TRANSITION STYLE FACILITY CATERING TO ALL SKILL LEVELS.

THE NEW SKATE PARK SPACE WILL PROVIDE THE LOCAL COMMUNITY WITH A PURPOSE BUILT FACILITY DESIGNED SPECIFICALLY FOR ALTERNATIVE ACTIVE RECREATION. THE NEW SKATEPARK WILL MEET CURRENT AND FUTURE INDUSTRY TRENDS COMPLEMENTING THE DEVELOPMENT OF THE SURROUNDING PARKLANDS.

THE FACILITY WILL CELEBRATE THE CULTURAL HERITAGE AND UNIQUE RIVERSIDE LOCATION OF PARADISE, PLAYING AN IMPORTANT ROLE WITHIN THE COMMUNITY'S PUBLIC REALM.

CONSULTATION SUMMARY

The pre-design consultation outcomes were summarised to inform a community driven design brief for the Paradise Skate Park. The information collected from the online survey has informed this brief. A summary of the findings have been outlined thematically and have been used as the foundation for the development of the concept design.

TARGET USER GROUP

The community feedback has highlighted skateboarders as the majority of users. It will however, cater to all user groups including those participating in BMXing, scooter, roller skating and all other active wheeled sport disciplines, as well as those non-active participants looking to spectate and enjoy the public space.

SKILL LEVEL PROVISION

There was a relatively even spread of abilities within the consultation. Many respondents suggesting the existing skate park is too advanced for many of the younger riders but surrounding facilities often failed to captivate more advanced users for prolonged periods. It is key to provide for skill progression within the facility while allowing for beginner users and future generations to learn and continue ongoing progression and for advanced users to continue to be challenged and remain interested. The design will aim to provide obstacles for all ability levels.

SKATE TYPOLOGY

A clear preference for a mixed facility of street and transition style elements was indicated by the majority of participants, with a standout response for a separate bowl area. There were comments from many members of the community that many surrounding parks were largely street based and failed to provide transition elements that appeal to advanced level users. The design will look to work in conjunction with the features found at surrounding facilities to help form a complementary skate park network throughout the greater Adelaide

SKATE VISION

The majority of riders favour a combination of flowy transition, street and traditional style parks. The facility design responds to community's desires, offering a variety of features that cater to all styles of riding including flowing transitions, street features and a standalone bowl. Within these typologies a range of beginner and advanced features are incorporated as key design considerations.

Standout features highlighted by the community were a closed bowl, slappy kerbs, kicker to kicker and the inclusion of pool coping. Furthermore, an interest in how to activate the space was also highlighted as desirable. The space must consider connecting elements suitable for the provision of such events.

USER + SPECTATOR AMENITIES

To ensure a central community space that can be used by a variety of different user groups, the facility will offer a number of social opportunities. The provision for areas of refuge and shade throughout the day is to be considered, whether purpose built or looking to utilise natural shade. Many highlighted the need for shade, spectator seating and lighting. This has been considered when developing the concept design.

ICONIC ELEMENTS + LOCAL IDENTITY

To celebrate Paradise and the wider Campbelltown region and give the park its own identity the design should reflect the surrounding contextual character and environment. An example of this was the suggestion of incorporating the theme of the nearby river and the surrounding natural context which form a part of the suburb's landscape character. Theming will be further tested during the concept phase of the project, as this will form a cultural identity for the space and provide local riders with a sense of ownership.

COMMUNITY CONSULTATION

APPROACH

The consultation process is an integral component of the development of youth spaces and skate facilities. In order to ensure the success and longevity of these key community assets it is crucial to engage with the future users of the space.

Due to the current social environment and social distancing practices Convic adapted their typical face-to-face community workshops to occur through an online platform as outlined below.

The pre design community consultation ran for two weeks from the 27th May to 10th June. It comprised of a video designed to educate and inspire the community on possible inclusions for the new facility and provide insight into the project parameters, opportunities and constraints. This was followed by an online questionnaire that allowed the community to provide feedback for the facility based on the information outlined in the video.

In addition further online consultation was held to gain the community's input into the wider master plan, play and BMX pump track.

The community consultation aimed to:

- Engage with community members and key stakeholders before the design of the new skate space building excitement for the project.
- Inform participants of key design considerations of the project to build an understanding of the possibilities and restrictions.
- Inspire participants through past project examples illustrating the nature of contemporary skate parks with a variety of integrated, broader community usage options. To show not just skater only facilities, but to include a variety of elements

such as, social gathering spaces, sculptural elements and other additional recreational opportunities, as well as illustrating the potential for activation and other community events.

- Gather user information and build user profiles.
- Gather community input into what they think the new facility should be.
- Have community and users take ownership of the consultation process outcomes.

A summary of the pre design community feedback has been summarised within the community design vision included in the following pages.

The draft concept design consultation saw a fly-through video produced, which discussed in detail the various elements of the recreation facility. Participants were then directed to an online questionnaire, where they were asked in detail about their thoughts on the design.

The draft concept design consultation process aimed to:

- Engage with community members and key stakeholders before the final concept design of the new skate space.
- Inform stakeholders and community members of the current status of the project.
- Have community and users take ownership of the consultation process outcomes.

A summary of the information provided by the end users has been included in draft concept consultation feedback pages of this report.

PROMOTIONAL SCOPE

The consultation aims to increase community awareness of the Paradise Skate Park project and to do so in an open, public and transparent process. The online advertising campaign included the sharing of the digital flyer on Convic's social media pages, through local business's and contacts and Councils social media networks.



Consultation flyer

THE PARADISE SKATE PARK PROJECT WILL BE A UNIQUE, FAMILY FRIENDLY DESTINATION THAT PROVIDES A MULTI-DISCIPLINE STREET AND TRANSITION STYLE FACILITY CATERING TO ALL SKILL LEVELS.

THE NEW SKATE PARK SPACE WILL PROVIDE THE LOCAL COMMUNITY WITH A PURPOSE BUILT FACILITY DESIGNED SPECIFICALLY FOR ALTERNATIVE ACTIVE RECREATION. THE NEW SKATEPARK WILL MEET CURRENT AND FUTURE INDUSTRY TRENDS COMPLEMENTING THE DEVELOPMENT OF THE SURROUNDING PARKLANDS.

THE FACILITY WILL CELEBRATE THE CULTURAL HERITAGE AND UNIQUE RIVERSIDE LOCATION OF PARADISE, PLAYING AN IMPORTANT ROLE WITHIN THE COMMUNITY'S PUBLIC REALM.

CONSULTATION SUMMARY

The pre-design consultation outcomes were summarised to inform a community driven design brief for the Paradise Skate Park. The information collected from the online survey has informed this brief. A summary of the findings have been outlined thematically and have been used as the foundation for the development of the concept design.

TARGET USER GROUP

The community feedback has highlighted skateboarders as the majority of users. It will however, cater to all user groups including those participating in BMXing, scooter, roller skating and all other active wheeled sport disciplines, as well as those non-active participants looking to spectate and enjoy the public space.

SKILL LEVEL PROVISION

There was a relatively even spread of abilities within the consultation. Many respondents suggesting the existing skate park is too advanced for many of the younger riders but surrounding facilities often failed to captivate more advanced users for prolonged periods. It is key to provide for skill progression within the facility while allowing for beginner users and future generations to learn and continue ongoing progression and for advanced users to continue to be challenged and remain interested. The design will aim to provide obstacles for all ability levels.

SKATE TYPOLOGY

A clear preference for a mixed facility of street and transition style elements was indicated by the majority of participants, with a standout response for a separate bowl area. There were comments from many members of the community that many surrounding parks were largely street based and failed to provide transition elements that appeal to advanced level users. The design will look to work in conjunction with the features found at surrounding facilities to help form a complimentary skate park network throughout the greater Adelaide region.

SKATE VISION

The majority of riders favour a combination of flowy transition, street and traditional style parks. The facility design responds to community's desires, offering a variety of features that cater to all styles of riding including flowing transitions, street features and a standalone bowl. Within these typologies a range of beginner and advanced features are incorporated as key design considerations.

Standout features highlighted by the community were a closed bowl, slappy kerbs, kicker to kicker and the inclusion of pool coping. Furthermore, an interest in how to activate the space was also highlighted as desirable. The space must consider connecting elements suitable for the provision of such events.

USER + SPECTATOR AMENITIES

To ensure a central community space that can be used by a variety of different user groups, the facility will offer a number of social opportunities. The provision for areas of refuge and shade throughout the day is to be considered, whether purpose built or looking to utilise natural shade. Many highlighted the need for shade, spectator seating and lighting. This has been considered when developing the concept design.

ICONIC ELEMENTS + LOCAL IDENTITY

To celebrate Paradise and the wider Campbelltown region and give the park its own identity the design should reflect the surrounding contextual character and environment. An example of this was the suggestion of incorporating the theme of the nearby river and the surrounding natural context which form a part of the suburb's landscape character. Theming will be further tested during the concept phase of the project, as this will form a cultural identity for the space and provide local riders with a sense of ownership.

DRAFT CONCEPT: CONSULTATION FEEDBACK

THE PARADISE SKATE PARK PROJECT WILL BE **A UNIQUE, FAMILY FRIENDLY DESTINATION** THAT PROVIDES A MULTI-DISCIPLINE STREET AND TRANSITION STYLE FACILITY CATERING TO ALL SKILL LEVELS.

THE NEW SKATE PARK SPACE WILL PROVIDE THE LOCAL COMMUNITY WITH A PURPOSE BUILT FACILITY DESIGNED SPECIFICALLY FOR ALTERNATIVE ACTIVE RECREATION. THE NEW SKATEPARK WILL **MEET CURRENT AND FUTURE INDUSTRY TRENDS** COMPLEMENTING THE DEVELOPMENT OF THE SURROUNDING PARKLANDS.

THE FACILITY WILL CELEBRATE THE CULTURAL HERITAGE AND UNIQUE RIVERSIDE LOCATION OF PARADISE, PLAYING AN IMPORTANT ROLE WITHIN THE COMMUNITY'S PUBLIC REALM.

DRAFT CONCEPT CONSULTATION SUMMARY

POOL/BOWL AREA

Many participants favoured a larger bowl area as well as an increased open space around the bowl with additional spectator seating. They felt this encouraged greater opportunity and versatility for riders compared to a more traditional kidney shaped pool bowl which would lead to greater overall capacity for the facility.

PLAZA AREA

Participants were generally in favour of the open plaza style aesthetic of this area, and felt that this design would lead to further creativity and progression. The street style of the features was supported, and most respondents were happy to see a range of features included within this area of the design. However, many felt the overall footprint area could be increased and skate-able stairs with a rail included within the main flow lines. Other comments mentioned repositioning the fire hydrant and including a standalone flat bar.

DRAIN + FLOW AREA

This area was received well by many participants but a small number of respondents mentioned including a more organic flow and away from linear flow. Other responses included adding pockets to either side of the spine ramp.

OVERALL SKATE AREA

The overall design of the skate space was very well received by the participants of the consultation and the main feedback centred around increasing the size of the space, therefore enhancing the capacity and broader appeal. This feedback was supported by Campbell City Council.

SUPPORTING AMENITIES

Respondents requested supporting amenities such as drinking fountains, seating, rubbish bins, lighting and shade shelters. This falls under the works for the wider parklands Paradise Youth Precinct and has been incorporated into the updated masterplan by Outersapce.

CONCEPTUAL IDEATION

THEMING

The new Paradise Skate Park and broader parkland redevelopment forms a part of the public open space network within the River Torrens/Karrawirra Parri ecological corridor. This corridor forms a green ribbon through the greater Adelaide region and has played a varying and significant role throughout the development of the City and surrounding municipalities.

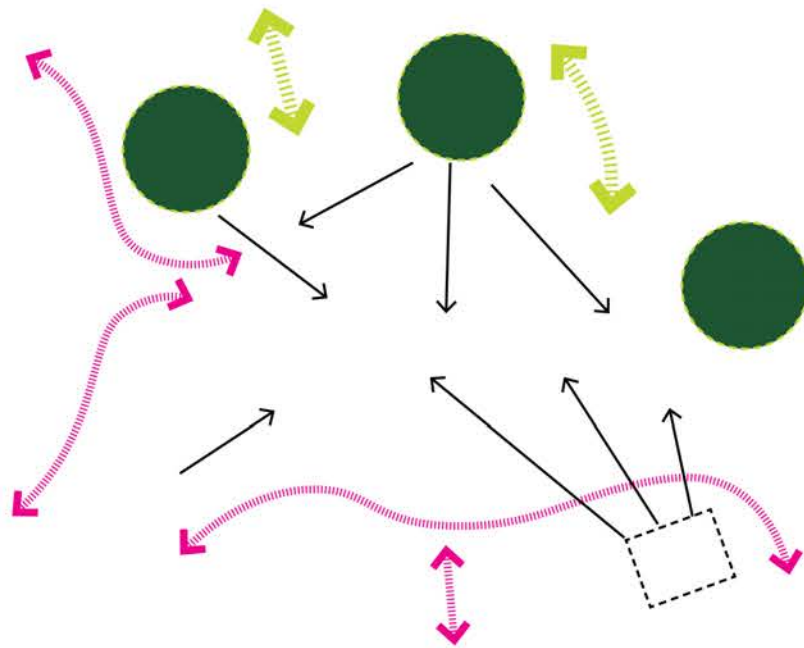
The unique terrestrial and limnological ecosystems that create the landscape character of the site will be enhanced through the interpretation of these natural systems and the flora and fauna habitats that they support. This will create an identity for the space that is unique to other active recreation spaces, allowing it to become an iconic, enjoyable and memorable destination.

Additionally, Outerspace Landscape Architects have identified this within their development of the surrounding parkland design and are proposing yabby-themed community artwork and sculpture art within the precinct. To strengthen links with the adjacent program, the skate park design draws inspiration from the unique colour of the Yabby. This colour will form highlights on skate features providing vibrancy against the natural earthy concrete tones that represent the natural environment surrounding the River Torrens and its banks. The arrangement of these concrete colours reflect the layer like formations of the shell on a Yabby tail.

The role of these elements within the design proposal not only form contextual links, they will contribute to creating a successful community space that is more social and enjoyable to use.



CONCEPTUAL DEVELOPMENT

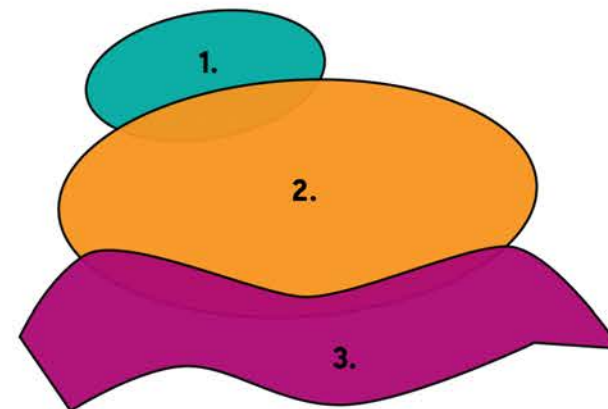


ACCESS, CONNECTIVITY & FORM TO COMPLEMENT SURROUNDING AMENITY & PRECINCT DESIGN

The design and layout of the skate space have been directly driven by the geometry and design language of the wider precinct design. The long curving edges and organic forms complement those frequently included throughout Outerspace's precinct design.

Connections and access points link to the key nodes within the parklands footpath network and new active paths have been created to enhance connections between the active skate, pump and parkour areas.

Shelter, seating and hang-out spaces have been positioned to provide open sight lines onto the active skate areas and allow for good passive surveillance, promoting CPTED principles.

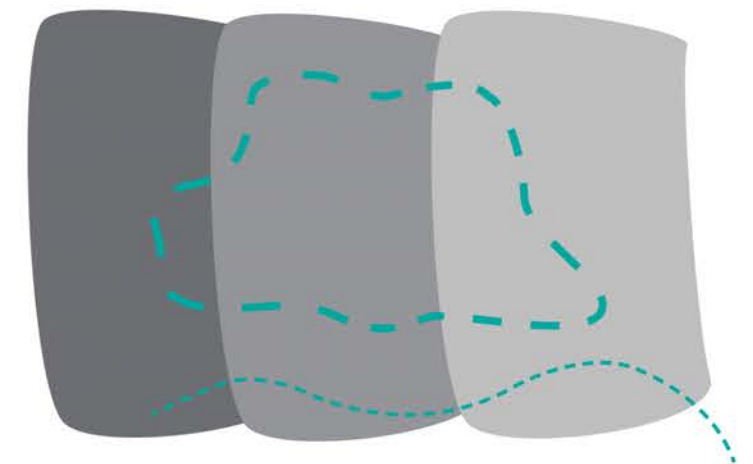


INDIVIDUAL SKATE AREAS

Located in the approximate position of the existing skate park the proposed layout utilises the current parks topography and expands on it to create three individual skate areas as requested by the community.

The pool area comprises traditional style skate elements and transitions with contemporary granite pool coping appealing to transition riders. The largest of the three zones; the open ditch and flow area replicates some popular features from the current skate park with new and up to date skate trend details. This central area ties the surrounding two together and offers a range of skate features, from transitions, banks, spines, rails and ledges appealing to a broad range of riders.

The plaza area provides an array of low level technical features replicating those found in the modern city urban realm and directly appeal to street riders. All skate areas will appeal to a range of user abilities and include features from beginner through to advanced levels.



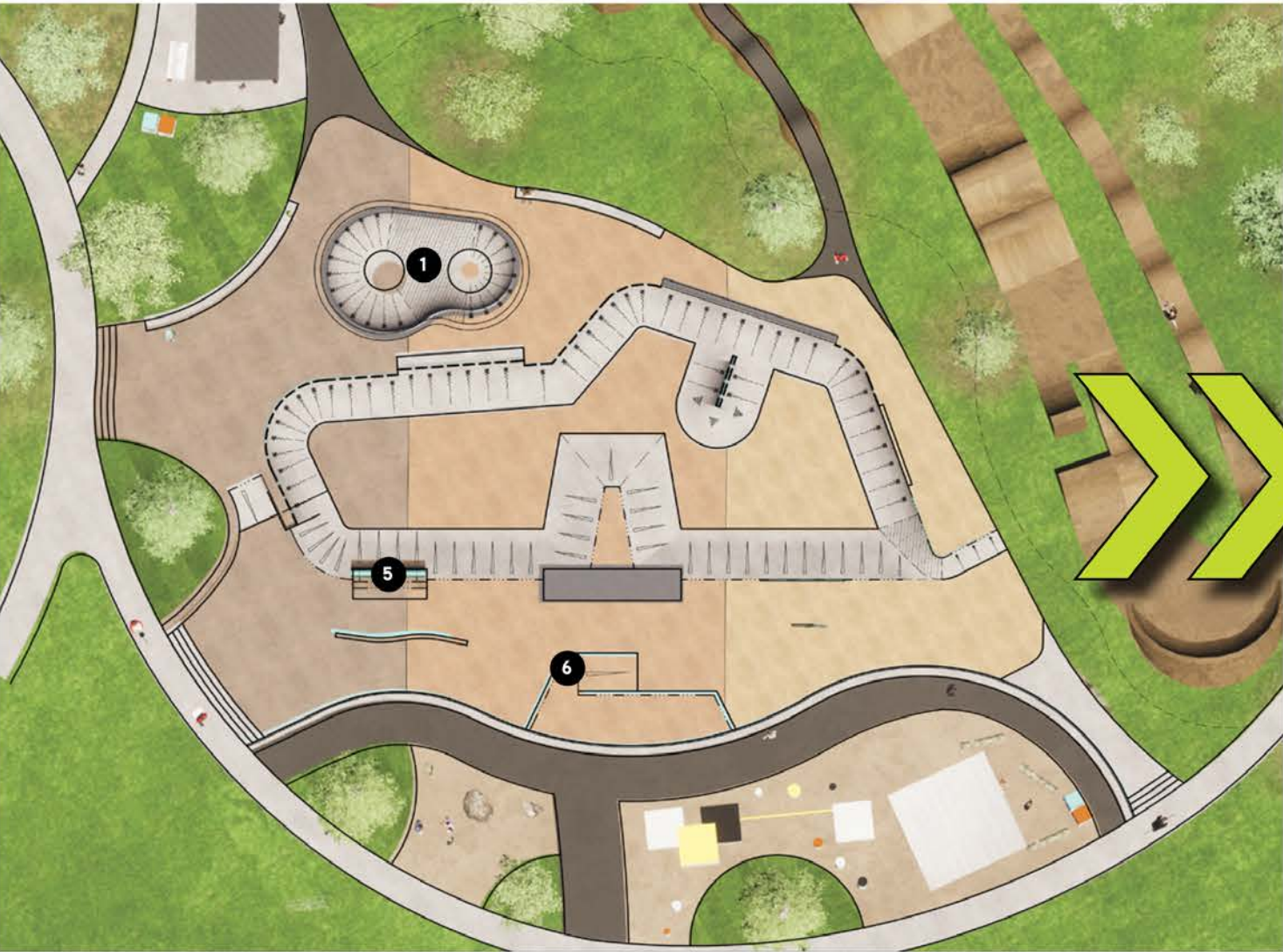
RIVER TORRENS + YABBY THEMING

A key design influence throughout the whole precinct is the River Torrens and the Yabbies which inhabit it. The skate park takes on these influences by using subtle changes in the coloured concrete to replicate the patterns found on the back of the freshwater crustaceans.

Further, paint highlights and coloured steel details bring a vibrancy to the more subtle earthy river based tones of the concrete which are offset by the bright and bold colours often found on the Yabby's claws and tails.

DRAFT TO FINAL: KEY CHANGES

DRAFT



FINAL



- 1 Pool bowl replaced with larger more versatile midi bowl and increased platform areas.
- 2 Additional spectator seating included around bowl area.
- 3 Stair set with rail and ledges added between the plaza and bowl area.
- 4 Stairs, ledges and additional level change added to allow full loop flow around all individual skate areas.

- 5 Jersey Barrier removed and additional quarter pipe, pockets and loveseat added to ditch/ flow area to provide more organic flow and lines within the area.
- 6 Fire hydrant repositioned between ditch and plaza area, providing more run up and landing space around the feature and additional lines between the ditch and plaza areas.
- 7 Plaza area increased to allow more features and flow including additional ledge, flat bar, wallie pimple, banks and better connections to the surrounding skate areas.

FINAL CONCEPT DESIGN PRECINCT OVERVIEW



FINAL CONCEPT DESIGN - PLAN

LEGEND

SKATE WORKS

- 1 Curved Concrete Seats
- 2 1800H Bowl Deep end
- 3 1200H Bowl Shallow end
- 4 1500H Pocket Extension + Loveseat
- 5 2100H Quarter Pipe Extension
- 6 1500H Transition Hip
- 7 750H Pyramid/ Driveway
- 8 1800H Pool Coping Extension
- 9 1200H Spine Ramp + Pockets
- 10 1500H Quarter Pipe
- 11 Stair Set with Rail + Ledges
- 12 Wallie Pimple
- 13 Flat Bar on Bank
- 14 Grind Ledge
- 15 Granite Manny Pad/ Ledge
- 16 Kerb Manny Pad
- 17 Flat Bar
- 18 Two Stair Ledges on Quarter Pipe
- 19 Kicker over Fire Hydrant
- 20 Pole Jam
- 21 Curved Out Ledge
- 22 600H Curved Feature Wall

ADDITIONAL WORKS (BY OTHERS)

- 1 BMX jumps track
- 2 Links to asphalt pump track
- 3 Perimeter circulation path
- 4 Shade structures
- 5 Parkour features
- 6 Trees + Softscaping
- 7 Sports Lighting

SHELTER AREA
DESIGN BY OTHERS

PUMP AND BMX TRACK
DESIGNS BY OTHERS

PARKOUR AND SHELTER
DESIGN BY OTHERS

SKATE PARK CONCEPT DESIGN

BOWL AREA



PERSPECTIVE 1

PLAZA AREA



PERSPECTIVE 2

DRAIN + FLOW AREA



PERSPECTIVE 3

SKATEPARK OVERVIEW



PERSPECTIVE 4

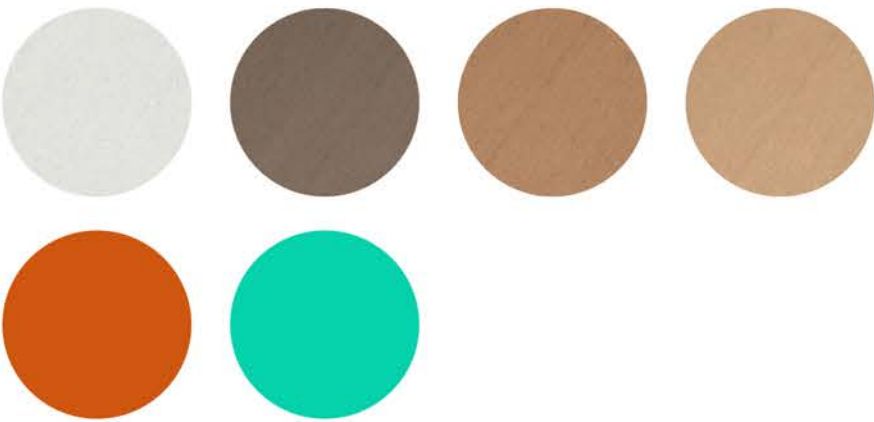
SKATE REFERENCE IMAGES

Skate obstacles have been designed to create a unique rider experience with features that are multifunctional and can be used a variety of ways.

- 1. Bowl with Granite Pool Coping
- 2. Granite Ledge
- 3. Stair Set with Rail
- 4. Transition Extension with Love Seat
- 5. Concrete Spectator Seating

COLOUR PALETTE

The material pallet has been selected to reflect the unique natural context of the surrounding area and the ecology system.



COLOURED CONCRETE + PAINTED HIGHLIGHTS



MOVING FORWARD

Upon review and endorsement of the final concept design by the Campbelltown City Council, this report will be utilised to secure the funding required to move through into detailed design and construction phases.

A detailed design and construction delivery model should be investigated by the Council that will enable a specialist contractor to be engaged to deliver a high quality and successful active recreation space. This delivery model will enable the Campbelltown City Council to reduce the overall project program and design fees while still providing the community and end users with a high quality and functional public realm space.

SECTION 3: BMX PARK CONCEPT DESIGN

INTRODUCTION /

The Trail Collective (TTC) have been engaged by Outerspace Landscape Architects in collaboration with Convic and Campbelltown City Council to deliver a Bike Park concept design for Paradise Recreation Plaza, located on the Darley Road, Paradise, South Australia.

This document displays the final design concept plans for a Bike Park within the Paradise Recreation Plaza.

BASELINE INFORMATION

Campbelltown City Council is developing a Masterplan for a proposed redevelopment (approximately 2.5 million) of the existing Paradise Skate Park to a Recreation Plaza including a BMX component.

The Recreation Plaza will be an inclusive space for people of all ages and abilities. This provides the community with an opportunity to learn new skills and develop a connection with the space.

CONSULTATION AND COMMUNITY ENGAGEMENT

TTC conducted positive and successful engagement processes with the client, community and key stakeholders. The community have confirmed their desires, inclusions and project requirements with the most favoured Bike Park style build.

The design intent in this document is aligned with the desires, feedback and data collated from the draft design community engagement phase of the project. Statistics captured from the second phase of consultation showed the public were 90% in favour for the bike park component of the masterplan.



DESIGN CONCEPT PLAN /

LEGEND:

PROPOSED BIKE PARK ELEMENTS & FEATURES:

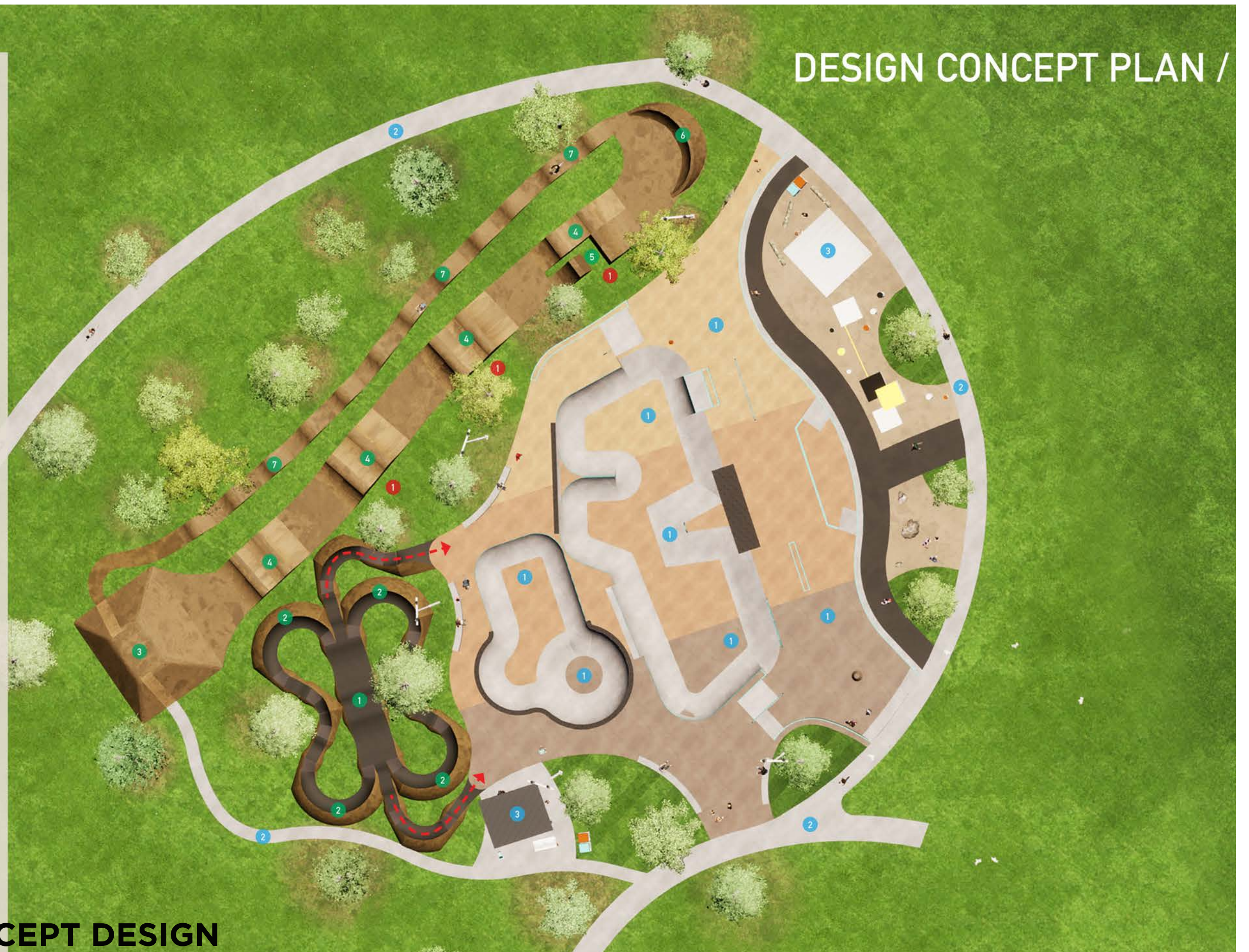
- 1 BEGINNER & INTERMEDIATE ASPHALT PUMP TRACK / HEIGHT RANGE - 0.5M - 1.5M h
- > PUMP TRACK TO SKATE PARK LINK / CONNECTION PATHWAYS
- 2 PUMP TRACK START & REST POINTS
- 3 START MOUND / HEIGHT - 2M h
- 4 BEGINNER & INTERMEDIATE DIRT JUMP SECTIONS / HEIGHT RANGE - 0.75M - 1.75M h
- 5 INTERMEDIATE TO ADVANCED DIRT JUMP SECTION / HEIGHT - 1.75M h
- 6 BERM FEATURE / HEIGHT - 1.75M h
- 7 RETURN ROLLER SECTION / HEIGHT RANGE - 0.4M - 0.6M h

REQUIRED BIKE PARK INFRASTRUCTURE:

- 1 IRRIGATION / HOSE REELS - TO SUPPORT MAINTENANCE OF THE SPACE

ADDITIONAL WORKS BY OTHERS:

- 1 SKATE PARK
- 2 ACCESS PATHWAYS
- 3 RECREATION AREAS



BMX PARK CONCEPT DESIGN

LEGEND:

FLOW LINES & SKILL LEVELS:

● BEGINNER - GREEN LINE

Easy riding, gentle rolling slopes and contours. Features can include smooth rollers and roll-able jumps. Riders must have basic bike handling skills.

● INTERMEDIATE - ORANGE LINE

Challenging riding including elements and features for the more experienced rider. These include steep slopes, double jumps and hip jumps. Riders must have competent BMX skills.

● ADVANCED - BLACK LINE

Difficult riding with complex elements and features. Lines are well defined with added obstacles and multiple options for a greater user experience, including large double jumps, hip jumps and spines. Riders must have advanced BMX skills.

LINE / FACILITY NAMES:

● BEGINNER & INTERMEDIATE PUMP TRACK / CONNECTIONS TO SKATE PARK

● BEGINNER JUMP SECTION

● INTERMEDIATE JUMP SECTION

● INTERMEDIATE TO ADVANCED JUMP SECTION



BMX PARK FLOW LINES

PERSPECTIVE (1)





PERSPECTIVE (2)



PARADISE RECREATION PLAZA

THANKS FOR YOUR TIME

PREPARED BY:

LEAD CONSULTANT /
LANDSCAPE ARCHITECTS:

**OUTER
SPACE**

REF: OS641
258A RUNDLE STREET
ADELAIDE SA 5000
(08) 8223 3228
WWW.OUTERSPACE.NET.AU

SKATE PARK
CONSULTANTS:

CONVIC

UNIT 13, 46-50 REGENT ST
RICHMOND VIC 3121
(03) 9486 9899
WWW.CONVIC.COM

BMX TRACK & TRAIL
CONSULTANTS:



PO BOX 447
GUMERACHA SA 5233
0433 820 370
WWW.THETRAILCOLLECTIVE.COM.AU

COUNCIL CONTACT
INFORMATION:



WWW.CAMPBELLTOWN.SA.GOV.AU