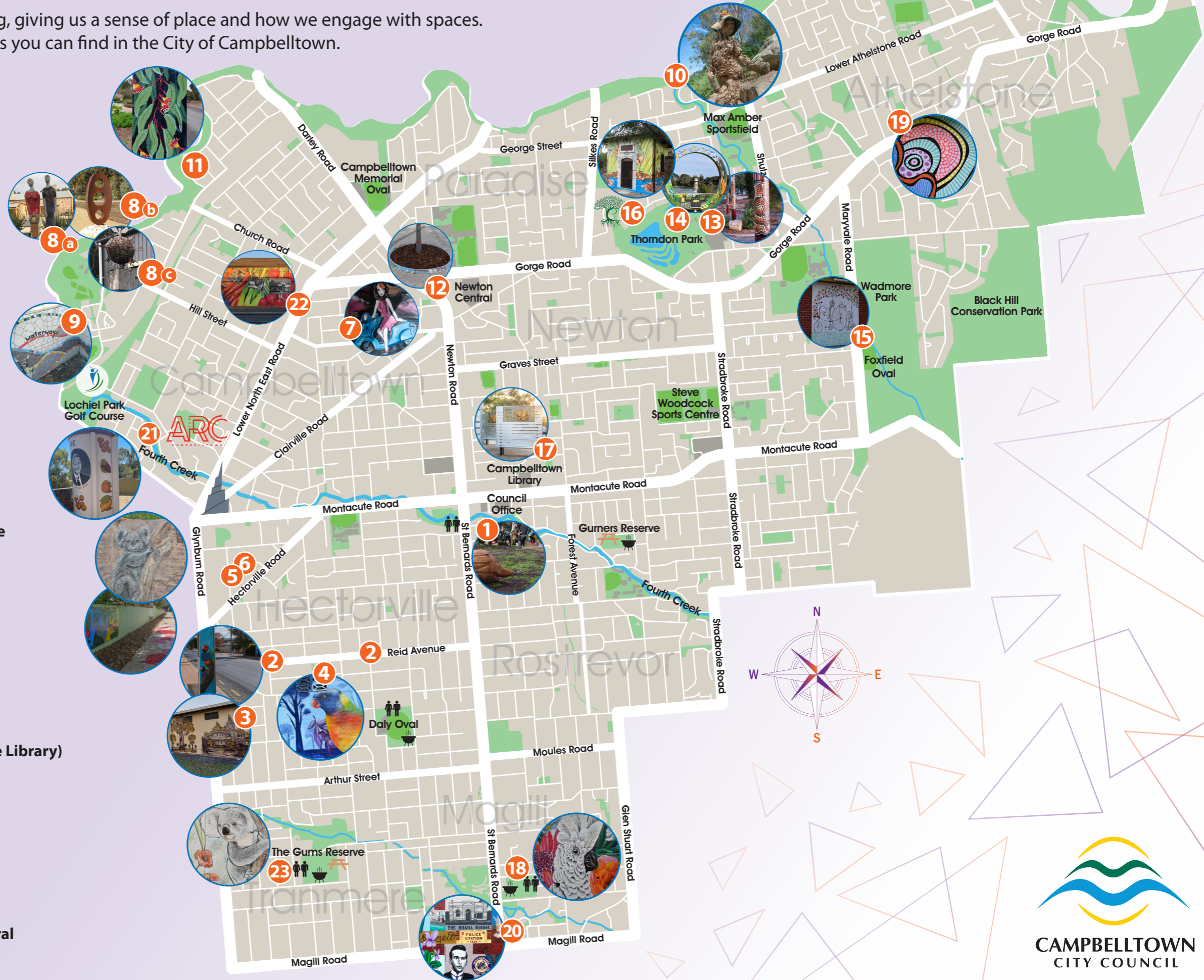


Campbelltown City Council *Public Art*

www.campbelltown.sa.gov.au/community/arts

Public art beautifies and stimulates thinking, giving us a sense of place and how we engage with spaces. The public art self-drive map includes works you can find in the City of Campbelltown.

- 1 Fourth Creek Nature Playground
- 2 Stobie Pole Art – Reid Avenue, Hectorville
- 3 Herb Reid Reserve, Tranmere – Mural
- 4 Shirley Avenue Reserve, Tranmere – Mural
- 5 Melville Grove Secret Playground Laneway
- 6 Melville Grove Secret Playground Mosaic Rocks
- 7 Wood Oven Gourmet Pizza – Mural Hambledon Road, Campbelltown
- 8 Lochiel Park Sculptures
- 9 Drainwaves Mosaic Art Project at Lochiel Park
- 10 River Torrens Figure
- 11 Stobie Pole Art – Greenglade Drive, Paradise
- 12 Jan Street Streetscape
- 13 Turangga (Thorndon Park Poles)
- 14 Photo Arch at Thorndon Park
- 15 Foxfield Oval Hall – Mural
- 16 Campbelltown Community Orchard – Mural
- 17 Outback Adventure Playground (next to the Library)
- 18 Nightingale Reserve, Magill – Mural
- 19 Lovell Reserve, Athelstone – Mural
- 20 Tower Hotel, Magill – Mural
- 21 Amadios Bore, Campbelltown – Mural
- 22 Campbelltown Village – Market Garden Mural
- 23 The Gums Reserve, Tranmere – Mural



Campbelltown City Council Public Art

www.campbelltown.sa.gov.au/community/arts

1 Fourth Creek Nature Playground 172 Montacute Road, Rostrevor

Artists: James Parker working with students from Stradbroke Primary School, Thorndon Park Primary School and Campbelltown Pre-School

An interactive / nature play area in Morialta Pari / Fourth Creek. A Community art project working with local schools and preschool, an artist and speech pathologist. Play elements include sound drums, hidden animals and nature elements for climbing and balancing. This is a place where families can enjoy an active lifestyle including creek play, climbing trees, balancing and climbing over rocks.



2 Stobie Pole Art Reid Ave, located between Laver Street and Sheppard Street, Hectorville

Artists: A partnership with Campbelltown ArtHouse, coordinated by local resident Yesha Joshi

Titled the '2030 Species Project', local community were encouraged to beautify the Street raising awareness on nature & wildlife.



3 Herb Reid Reserve Mural Samuel Street, Tranmere

Artist: John Whitney

Historical mural depicting the early Tranmere Tennis club players and the Historic Tranmere House. Tranmere house was built in 1898 for George Hunt who was a merchant owning four large shops on Rundle Street opposite Adelaide Arcade. He built his mansion on a block of land previously owned by George Morphet.



4 Shirley Avenue Reserve Mural Shirley Avenue, Tranmere. (off Reid Avenue)

Artist: Tayla Carlaw

Commissioned by Council, Tayla chose a design identifiable to the community of local fauna. This was the first time Tayla painted a bee, as she was fascinated by the 'Bee Hotels' in the community.



5 Melville Grove Secret Playground Laneway

Artists: James Parker and Community

April school Holiday activity Open to families and children in 2019 – 25/30 people per day participated, with a total of about 60 people in all. Focus of things to do with farms and growing foods.



6 Melville Grove Secret Playground Mosaic Rocks

Artist: Tatty K

Commissioned mosaic artwork on rocks, which were brought in to the upgraded play area.



7 Wood Oven Gourmet Pizza Hambledon Road, Campbelltown

Artist: Luke Turner

Commissioned by the business to enhance shop frontage.



8a Lochiel Park Sculptures

Lochend House, Lochend Drive, Campbelltown

Artists: Dave Parker and Rayna Schoefeld

'Eye to the Future' Mosaic Sculpture representing early settlers in the Campbelltown area.



8b Lochiel Park Sculptures

Lochiel Park Green Village / Kudlayurlo Wodli Parri, Campbelltown

Artists: Karl Telfer, Gavin Malone & Greg Johns

Bulto Ityangga Traces, an artwork that integrates the cultural and physical landscapes with sculptural objects and the local landform to provide a contemporary gateway to reading the narratives or stories inscribed in our landscape. Bulto Ityangga Traces recognises and respects Kaurna as a living culture and an integral part of our cultural landscape. It reflects Kaurna country and cultural traditions both physically and metaphysically. It provides a place to look around, towards the hills and river, along the sight lines, to appreciate story, to think, to connect.



8c Lochiel Park Sculptures

Ripples Art Shed, Lochend Drive, Campbelltown

Artist: Dave Parker

'COVID 19' created when Covid first hit and lockdowns were upon us. The piece expresses the impact of Covid on the world.



9 Drainwaves Mosaic Art Project Located through Lochiel Park sustainable housing development

Artists: Ripples Community Arts Inc.

As part of the Lochiel Park residential development 27 bio-retention pits were incorporated in the street verges. Designs for the drains were sought through a public consultation process. Mosaic workshops were undertaken. The first completed design "Walks and Waves" was installed on the drain in November 2013. Over the following seven and half years, Ripples members continued the Drainwaves project with the final mosaic drain completed in March 2021. For information on the completed drains, you can download the drain location map at <https://ripplescommunityarts.wordpress.com/drain-location-map>



10 River Torrens Figure

Located on the River Torrens, Linear Park via Heather Court

Artist: Unknown

A surprise Guerilla Art installation in Campbelltown.



11 Stobie Pole Art

Greenglade Drive, Paradise

Artist: Tikari Rigney

The City of Campbelltown recognises the importance of creative contributions from community and supports community members and groups wishing to undertake stobie pole art in their streets.



12 Streetscape Art

Jan Street, Newton

Artists: Ripples Community Arts Inc.

Mosaics around tree boxes.



13 Turangga (Thorndon Park Poles)

Thorndon Park, Paradise

Artist: Marra Dreaming

Translation – 'shady place'. Throughout Campbelltown, we are proud to promote respect for Aboriginal and Torres Strait Islander peoples and culture.



14 Photo Arch

Thorndon Park, Paradise

Artists: James Parker with young Community members Mara Guez, Ellie Turner, Emma Burgess and Monique Monzomite.

A picture frame for all the family to enjoy. Jointly designed and painted with young community members.



15 Foxfield Oval Hall Mural

Foxfield Oval, Maryvale Road, Athelstone

Artists: Interchangeable – available for interested artists

First painted in 2013 when Stage 2 Finish of the Tour Down Under was hosted by Campbelltown City Council. This is a site which Council will offer for other local artists to have the opportunity to paint. Check council website Art & Culture pages for next opportunity call out.



16 Campbelltown Community Orchard Mural

Reservoir Rd, Paradise

Artists: Melanie Spurling with members of the Community Orchard

Campbelltown City Council worked with local Community to establish a Community orchard on the land around the pump house. The mural design – spilling out from an iron gate is a collage of sepia toned photographs depicting the history of market gardens in the area, an abstracted Torrens River feeding into the Thorndon Park Reservoir and the silhouette of the Mt Lofty Ranges with a pattern of orchard produce. Running across the top of the walls, are abstract illustrations depicting the story of cultivation, and large details of fruiting branches showing some of the current species growing in the Community Orchard. This is set on a green background depicting a close up detail of celery – one of the major market garden crops previously grown in the area.



17 Outback Adventure Playground

Next to the library, Montacute Rd, Newton

Artists: James Parker and Campbelltown Pre-Schoolers

The pre-schoolers who drew and designed the artwork for this playground area selected a theme of animals.



18 Nightingale Reserve Mural

Corner St Bernards and Woodforde Roads, Magill

Artist: Nicky Create

Commissioned by Council – Nicky chose a fun botanical mural design with native birds and flowers. Her hope with this design was to bring vibrancy & joy to the area.



19 Lovell Reserve, Athelstone

Lovell Reserve, Ryan Ave, Athelstone

Artist: Scott Rathman

Commissioned by Council – Scott worked with local pre-school and discussed how the park was significant to them. Taking guidance from this the design symbolises a 'Gathering Place' and the journeys we share in getting there.



20 Tower Hotel Mural, Magill

Corner of St Bernards & Magill Roads

Artists: Designed by John Whitney and painted together with Campbelltown ArtHouse members – Bernadette Freeman, Ann Whitby, Sally Caston, James Parker and June Turbin

Depicts the history of the Magill area, which was originally known as Makgill. The mural features the pre-European natural environment and Indigenous presence, European colonisation, and significant buildings, businesses, schools, and people from the area.



21 Amadios Bore, Campbelltown

Morialta Pari / Fourth Creek Allot 102 Wicks Avenue, Campbelltown (between James Street and Hawthorn Crescent where the trail deviates from James Street).

Artists: John Whitney and Bernadette Freeman

Aside Morialta Pari trail, this mural was painted on the stack as a tribute to the Amadio Family and their market garden which was in that immediate area.



22 Campbelltown Village – Market Garden Mural

636 Lower North East Road Campbelltown

Artist: Jack Fran

Celebrating the proud market gardening heritage of Campbelltown this mural depicts historical photos and market garden produce.



23 The Gums Reserve Mural

Shakespeare Ave, Tranmere

Artists: Melita and Kiera Scott

A mother and daughter artistic team, this mural design incorporates protected species from the local area as well as red poppies which reflect and coincide with the adjoining ANZAC memorial garden.

