

# Why waste it? Let's sort it.



**General Waste**



**Recycling**



**Green Organics**

Find out how you can  
**avoid, reduce, reuse,**  
**recycle** and  
**compost** materials  
to minimise  
contamination  
and waste going  
to landfill.



# Why is this important?

Sending waste to **landfill is expensive**.

From 2020 this will cost approximately **\$180 per tonne, a 30% increase** in 1 year.

By reducing your waste, you will help to reduce the impact that this cost increase will have on our Councils and ratepayers.

Significant cost savings can be gained...



It is important that we keep contaminants out as this reduces the recyclability of materials.

Sending waste to landfill also has **significant environmental costs**.

Avoiding waste is the best option to **reduce greenhouse gas emissions** and demand on our natural resources.

# AVOID

# REDUCE

**Why waste it?**  
**When you can**  
**avoid or reduce it.**



Single Use,  
Disposable Packaging  
eg. Polystyrene



Plastic  
Bags



Individually  
Packaged/Wrapped  
Food Items



Excess  
Packaging



Low Quality  
Non-Durable Items



Junk Mail



Food Waste



Coffee Pods



**EastWaste**



# AVOID



# REDUCE

## **Avoid or reduce these:**

- Single-use, disposable containers and packaging
- Polystyrene/foam
- Plastic bags
- Individually packaged/wrapped food items
- Pre-packaged fresh fruit and vegetables
- Purchasing items with excess packaging
- Items that cannot be recycled or composted
- Purchasing cheap, non-durable items
- Using coffee pod machines
- Junk mail (use a 'No Junk Mail' sticker)
- Printing when you can email instead

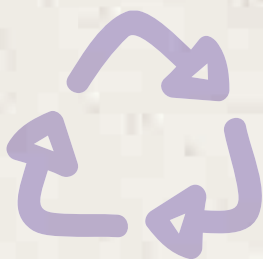
For more information on items you can  
avoid or reduce go to:

**[eastwaste.com.au](http://eastwaste.com.au)**

**EastWaste**



# RE-USE



**Why waste it?  
When you can  
re-use it.**



**Pre-Loved  
Clothing, Towels  
and Bedding**



**Cloth  
Nappies**



**Shopping  
Bags**



**Non-Disposable  
Coffee Cups**



**Non-Disposable  
Lunch Boxes and  
Food Packaging**



**Crockery and  
Cutlery**



**Non-Disposable  
Water Bottles**



# RE-USE

## Choose to re-use:

- ✓ **Clothing, towels and bedding**
  - donate your unwanted clothing, footwear, towels and bedding to charity and

purchase pre-loved clothing while you're there. If these items are too old, use as rags or donate them to animal shelters for bedding. Do not place them in your yellow bin!

- ✓ **Cloth nappies** - better for baby and the environment, with great designs and easy to use and clean.
- ✓ **Shopping bags** - choose reusable shopping bags instead of plastic. Choose ones made from bamboo, jute, recycled PET, or organic cotton.
- ✓ **Non-disposable coffee cups** - some cafés (check out [responsiblecafes.org](http://responsiblecafes.org)) offer discounts for using a re-usable takeaway cup!
- ✓ **Re-usable lunch boxes and food packaging** - there are many convenient re-usable food packaging items for kids and adults to ensure their lunches are waste free. Tupperware has been making them for decades.
- ✓ **Crockery and cutlery** - use re-usable, washable dinner wear and load it into the dishwasher after a party to use again.
- ✓ **Non-disposable water bottles** - available in stainless steel, plastic and glass, with many great designs and colours.
- ✓ **Old furniture** - refurbish and re-purpose into new masterpieces or donate to charity.
- ✓ **Paper** - single sided printed paper can be printed again on the other side, or used for note pads. Wrapping paper can be re-used to wrap another present. Newspaper can also be used for wrapping and packaging.

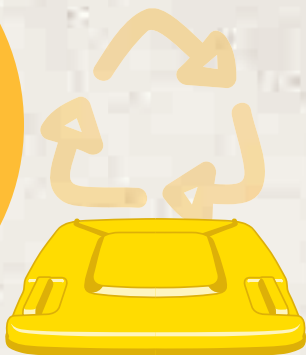
**Get crafty!** There are many great re-use, re-purposing ideas you can do at home. See what ideas you can find on the web.

For more information on items to re-use go to:

**[eastwaste.com.au](http://eastwaste.com.au)**

**EastWaste**

# RECYCLE



## Why waste it? When you can recycle it.



Paper and  
Cardboard



Rigid Plastic Bottles  
and Containers



Aluminium Cans  
and Aerosols



Glass Bottles  
and Jars



Liquid Paper  
Board Cartons



Aluminium Trays  
and Foil



Tins and Cans



NO Clothing  
and Textiles



NO Plastic Bags



NO Garden  
Materials



NO Food  
or Drinks



NO Polystyrene  
Foam



EastWaste

# RECYCLE



**Please  
recycle in  
your  
yellow  
bin:**

## **Paper and Cardboard**

- ✓ Newspapers
- ✓ Egg cartons
- ✓ Magazines
- ✓ Cardboard boxes
- ✓ Envelopes
- ✓ Milk and juice cartons

## **Rigid Plastic**

- ✓ Drink bottles
- ✓ Ice cream and yoghurt containers
- ✓ Margarine containers
- ✓ Lids (collect inside a clear PET plastic bottle, once full place in the bin)
- ✓ Milk and juice bottles
- ✓ Takeaway food containers
- ✓ Laundry and bathroom containers

## **Glass**

- ✓ Bottles and jars

## **Metals**

- ✓ Tin, aluminium and steel cans
- ✓ Metal lids (collect steel lids inside a steel can, squash top of can together to contain them, then place in the bin)
- ✓ Aluminium foil trays, wrap and lids (scrunch together into a ball, then place in the bin)
- ✓ Aerosol cans (empty)

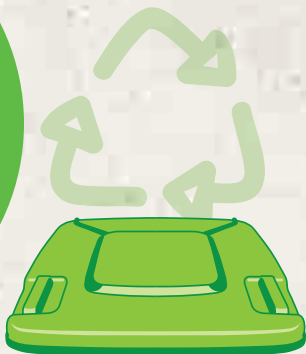
**Please ensure your recyclables are empty and clean with lids removed. Please place items in loose, never in a bag!**

For more information on recycling go to:

**[whichbin.sa.gov.au](http://whichbin.sa.gov.au)**

**EastWaste**

# COMPOST



## Why waste it? When you can compost it.



Fruit and  
Vegetable scraps  
(Cooked & Raw)



Seafood, Meat  
and Bones  
(Cooked & Raw)



Tea Bags and  
Coffee Grounds



Egg and Oyster  
Shells



Dairy Products  
(Cheese & Yoghurt)



Compostable  
Food Packaging



Paper Towels  
and Tissues



Lawn Clippings  
and Weeds



Flowers



Garden  
Clippings



Shredded  
Paper



Pet Waste



NO Plastic Bags  
or any Plastic



NO Hoses,  
Irrigation Pipe  
or Garden Tools



NO Bricks, Rocks,  
Dirt or Building  
Materials



# COMPOST



## Please compost in your green bin:

- ✓ Food scraps (including citrus, onion, dairy, meat, bones, fish, fruit and vegetable scraps)
- ✓ Compostable kitchen caddy liners - must be certified compostable (as supplied through Council)
- ✓ Tea leaves and tea bags
- ✓ Coffee grounds
- ✓ Egg and oyster shells
- ✓ Pizza boxes, cardboard and compostable food packaging
- ✓ Tissue and paper towel
- ✓ Lawn clippings and Weeds
- ✓ Cut flowers
- ✓ Small cuttings, prunings and branches
- ✓ Shredded paper (loose/not bagged)
- ✓ Pet waste (no plastic bags or kitty litter)
- ✓ Sawdust
- ✓ Hair and nail clippings

**Many of these items can also be composted  
in your home compost.**

**Please DO NOT place any plastics including bags,  
irrigation pipe, hoses, bottle caps, or metals  
in the green organics bin.**

For more information on what can be composted  
through the green bin go to:

**[whichbin.sa.gov.au](http://whichbin.sa.gov.au)**

**EastWaste**

# Recycling creates more jobs



For every **10,000 tonnes** of **materials recycled** there are **9.2 full time jobs** created compared to just **2.8 jobs** when sent to **landfill**.

**Reducing waste and recycling not only makes sense, it makes dollars too!**

# For more information please contact **East Waste**



[eastwaste.com.au](http://eastwaste.com.au)



[east@eastwaste.com](mailto:east@eastwaste.com)



[@EastWasteSA](https://www.facebook.com/EastWasteSA)



[@East\\_Waste](https://twitter.com/East_Waste)



[whichbin.sa.gov.au](http://whichbin.sa.gov.au)

If you require assistance interpreting this brochure  
please contact your local Council on 8366 9222.

Se hai bisogno di assistenza per interpretare  
questo brochure si prega di contattare il Consiglio  
locale su 8366 9222.

如果您需要帮助解释本手册，请联系您当地的理事会  
8366 9222.

Αν χρειάζεστε βοήθεια για την ερμηνεία αυτού  
του φυλλαδίου, επικοινωνήστε με το τοπικό  
συμβούλιο σας 8366 9222.



Printed on 100% recycled paper



**EastWaste**