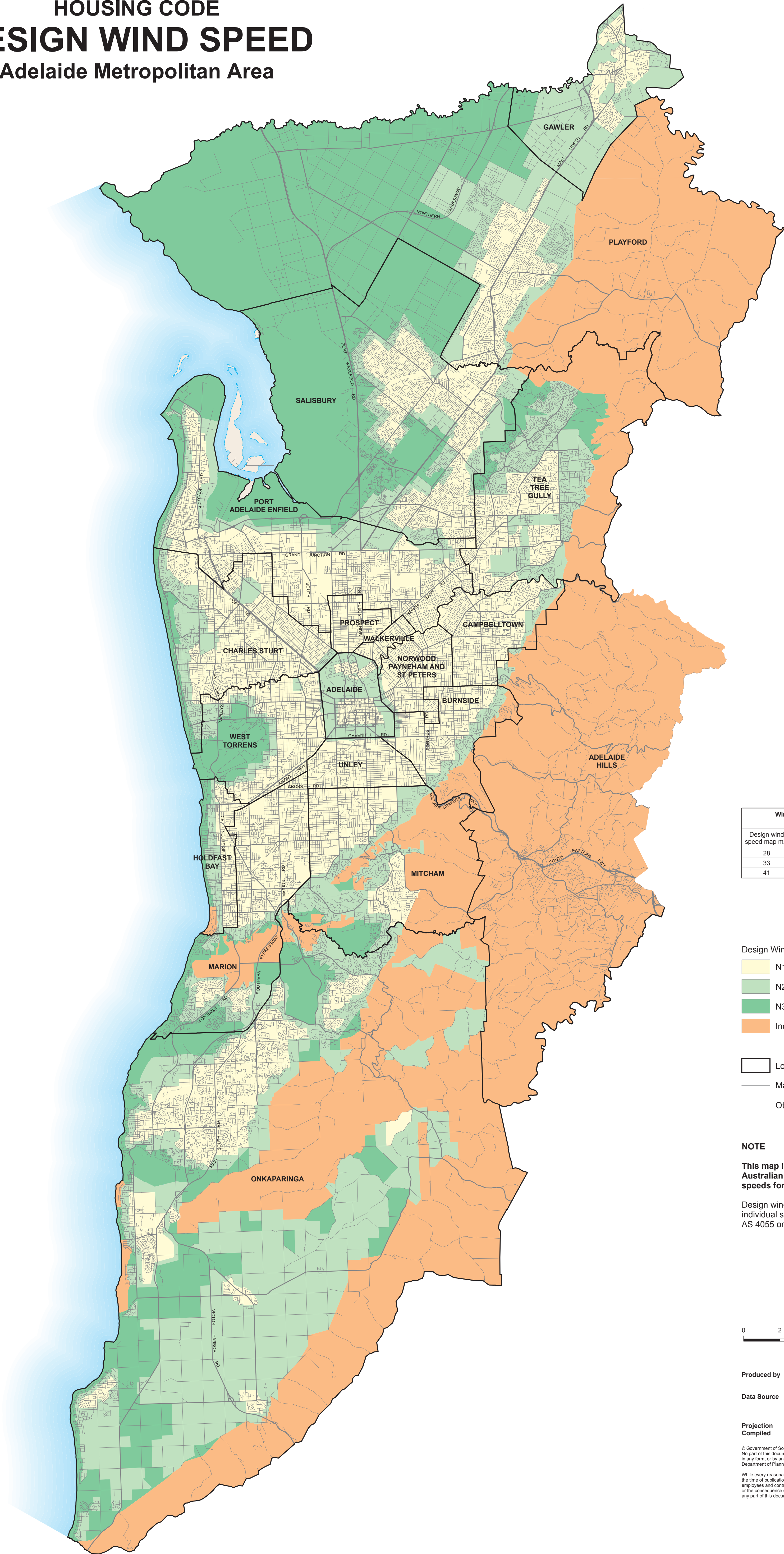


SOUTH AUSTRALIAN
HOUSING CODE
DESIGN WIND SPEED
Adelaide Metropolitan Area



Wind class		Design gust wind speed (V_h) at height (h) m/s	
Design wind speed map m/s	Australian Standard 4055	Serviceability 4055 limit ($V_{h,s}$)	Ultimate limit state ($V_{h,u}$)
28	N1	26	34
33	N2	26	40
41	N3	32	50

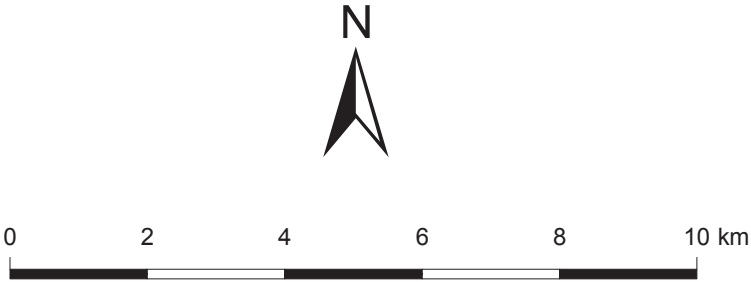
- Design Wind Speeds
- N1 (28 m/s)
 - N2 (33 m/s)
 - N3 (41 m/s)
 - Individual assessment

- Local government boundary
- Main road
- Other road

NOTE

This map is limited to use with the South Australian Housing Code for determining wind speeds for Class 1a and Class 10a buildings.

Design wind speed may also be determined by individual site assessment in accordance with AS 4055 or AS/NZS 1170.2.



Produced by Department of Planning and Local Government
GPO Box 1815 Adelaide SA 5001
www.dplg.sa.gov.au

Data Source Roads supplied by the Department of Transport, Energy and Infrastructure. Local governments supplied by the Department for Environment and Heritage.

Projection Lambert Conformal Conic

Compiled April 2010

© Government of South Australia 2010.
No part of this document may be reproduced, stored in a retrieval system, or transmitted in any form, or by any means, without the prior written permission of the publisher, Department of Planning and Local Government.

While every reasonable effort has been made to ensure that this document is correct at the time of publication, the State of South Australia and its agencies, instrumentalities, employees and contractors disclaim any and all liability to any person in respect to anything or the consequence of anything done or omitted to be done in reliance upon the whole or any part of this document.