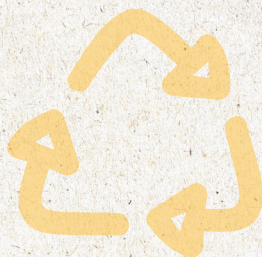


# RECYCLE



## Why waste it? When you can recycle it.



Paper and  
Cardboard



Rigid Plastic Bottles  
and Containers



Aluminium Cans  
and Trays



Glass Bottles



Liquid Paper  
Board Cartons



Metal Pots  
and Pans



Plastic Toys



Plastic and  
Metal Lids



NO Plastic Bags



NO Polystyrene Foam



[whichbin.com.au](http://whichbin.com.au)

# RECYCLE

**Please  
recycle in  
your yellow  
lidded  
recycle bin:**

## **Paper and Cardboard**

- ✓ Newspapers
- ✓ Egg cartons
- ✓ Magazines
- ✓ Cardboard boxes
- ✓ Envelopes
- ✓ Milk and juice cartons

## **Rigid Plastic**

- ✓ Drink bottles
- ✓ Ice cream and yoghurt containers
- ✓ Margarine containers
- ✓ Plastic toys
- ✓ Milk and juice bottles
- ✓ Takeaway food containers
- ✓ Laundry and bathroom containers

## **Glass**

- ✓ Bottles and jars

## **Metals**

- ✓ Tin, aluminium and steel cans
- ✓ Metal lids
- ✓ Aluminium foil trays and foil wrappers (scrunched into a ball)
- ✓ Aerosol cans (empty)
- ✓ Pots and pans

**Please ensure your recyclables are empty and clean**

**For more information on recycling go to:**

**[whichbin.com.au](http://whichbin.com.au)**